

# MONTHLY MEMBERSHIP PROGRESS REPORT

District 201N4

Results as of: 1/31/2024

GMT:

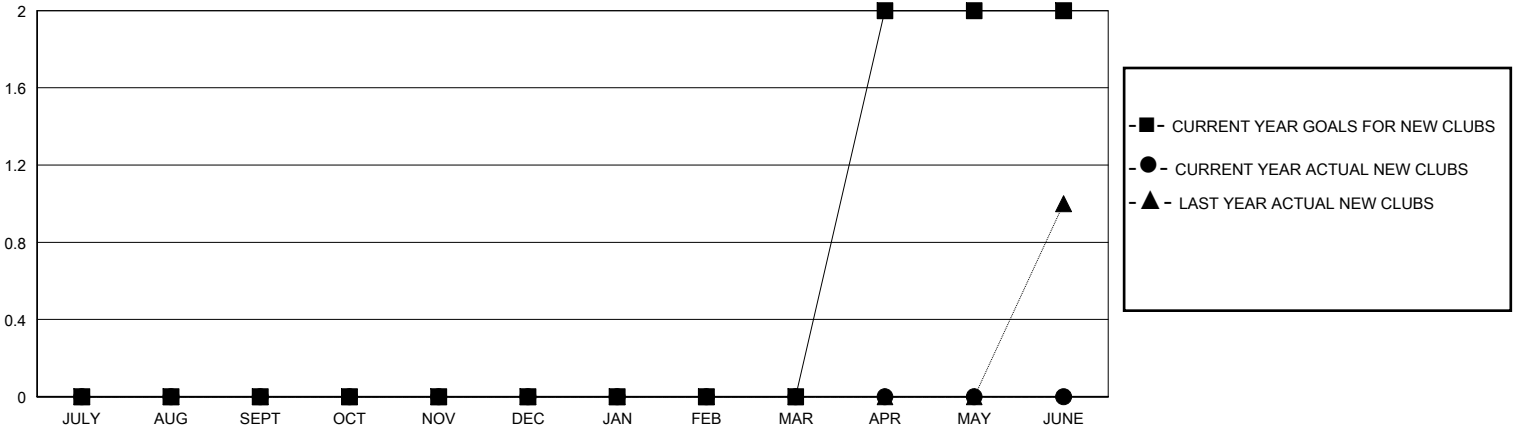
LOCATION AUSTRALIA

GMT CA

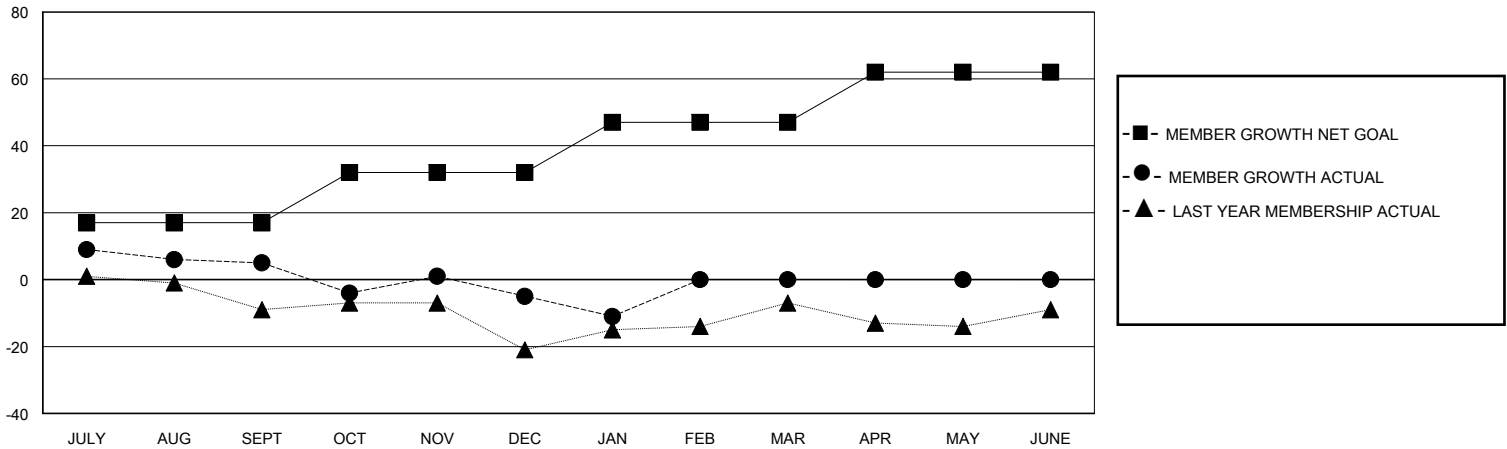
Clubs			
RESULTS FOR 2023-2024			
QUARTER	NEW CLUB GOAL	NEW CLUBS	DROPPED CLUBS
JULY/AUG/SEPT	0	0	0
OCT/NOV/DEC	0	0	0
JAN/FEB/MAR	0	0	0
APR/MAY/JUNE	2	0	0

Members			
RESULTS FOR 2023-2024			
QUARTER	MEMBER GROWTH NET GOAL	MEMBER GROWTH ACTUAL	DROPPED MEMBERS ACTUAL (including transfers)
JULY/AUG/SEPT	17	23	16
OCT/NOV/DEC	15	18	27
JAN/FEB/MAR	15	4	8
APR/MAY/JUNE	15	0	0

GOALS AND ACTUAL NEW CLUBS CUMULATIVE



GOALS AND ACTUAL MEMBERS CUMULATIVE



DROPPED CLUBS: 0	20 CLUBS OF 45 ADDED 1 OR MORE NEW MEMBERS	<b>GENDER DISTRIBUTION</b> MALE 570 (66.59%) FEMALE 286 (33.41%)
<b>DROPPED MEMBERS</b> DECEASED 15 CLUB CANCELLED 0 OTHER 36 TOTAL 51	<a href="#">CLICK HERE FOR CUMULATIVE MEMBERSHIP DATA</a>	TOTAL FAMILY UNIT MEMBERS 153 FAMILY MEMBERS PAYING HALF DUES 77